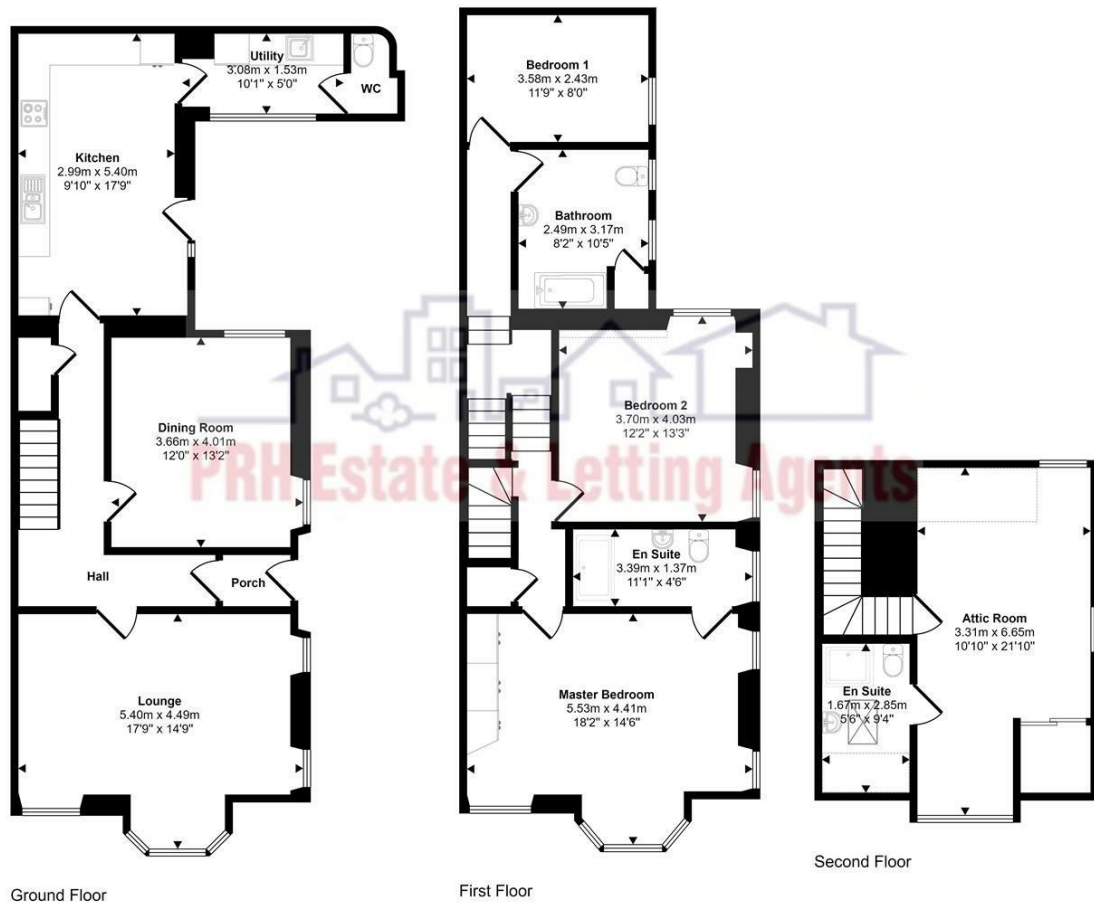




Penzance

£480,000



The accuracy of these particulars is not guaranteed nor do they form part of any contract. Applicants should verify details by personal examination and enquiry.

PRH is a trading name of PRH Lettings Limited. Registered office: 15 Alverton Street, Penzance, Cornwall, TR18 2QP. Registered in England No. 6667569



4 The Green Market, Penzance, Cornwall, TR18 2SH T: 01736 363816 E:mail@prhpenzance.co.uk

1 Lannoweth Road  
Penzance  
TR18 3AB

£480,000

## KEY FEATURES

- Freehold Period Town House
- Immaculately Presented
- 4 Double Bedrooms (2 En Suite)
- An Abundance of Light Throughout
- Harbour and Sea Views
- EPC D (64 81)
- Close to Amenities
- Gas Central Heating
- Enclosed Courtyard
- End Of Terrace

## DIRECTIONS

As you leave Penzance town centre with the train station on your right, continue on East Terrace. Turn left onto Lannoweth Road where No. 1 is situated on the right hand side of the road.



*Step into this immaculately presented four-bedroomed Victorian townhouse, a residence where period charm meets contemporary sophistication. From the moment you enter, you'll be captivated by the stunning panoramic sea vistas that grace multiple rooms.*

*The ground floor unfolds with a beautifully appointed lounge, bathed in natural light, a refined dining room perfect for entertaining, a stylish kitchen designed for modern living, a practical utility room, and a convenient WC.*

*Ascend the elegant staircase to the first floor, where three generously sized double bedrooms await. The exquisite master suite boasts an en-suite showerroom, while a beautifully finished family bathroom serves the remaining bedrooms. Each room on this level is imbued with a sense of light and space, showcasing the meticulous attention to detail.*

*The journey continues to the second floor, revealing a truly exceptional triple-aspect bedroom. This remarkable space benefits from an abundance of natural light and offers enviable views sweeping across Penzance town, the bustling harbour, and the endless expanse of the sea beyond. An en-suite shower room adds a touch of indulgence to this remarkable retreat.*

*Completing this exceptional home is a delightful courtyard, a veritable sun trap, ideal for enjoying peaceful moments outdoors. Situated in a prime location, just moments from the town centre and train station, this property offers both convenience and prestige. The standard of finish throughout is simply exceptional, creating a home that is not only impressive in size but also a testament to meticulous care and impeccable taste.*

